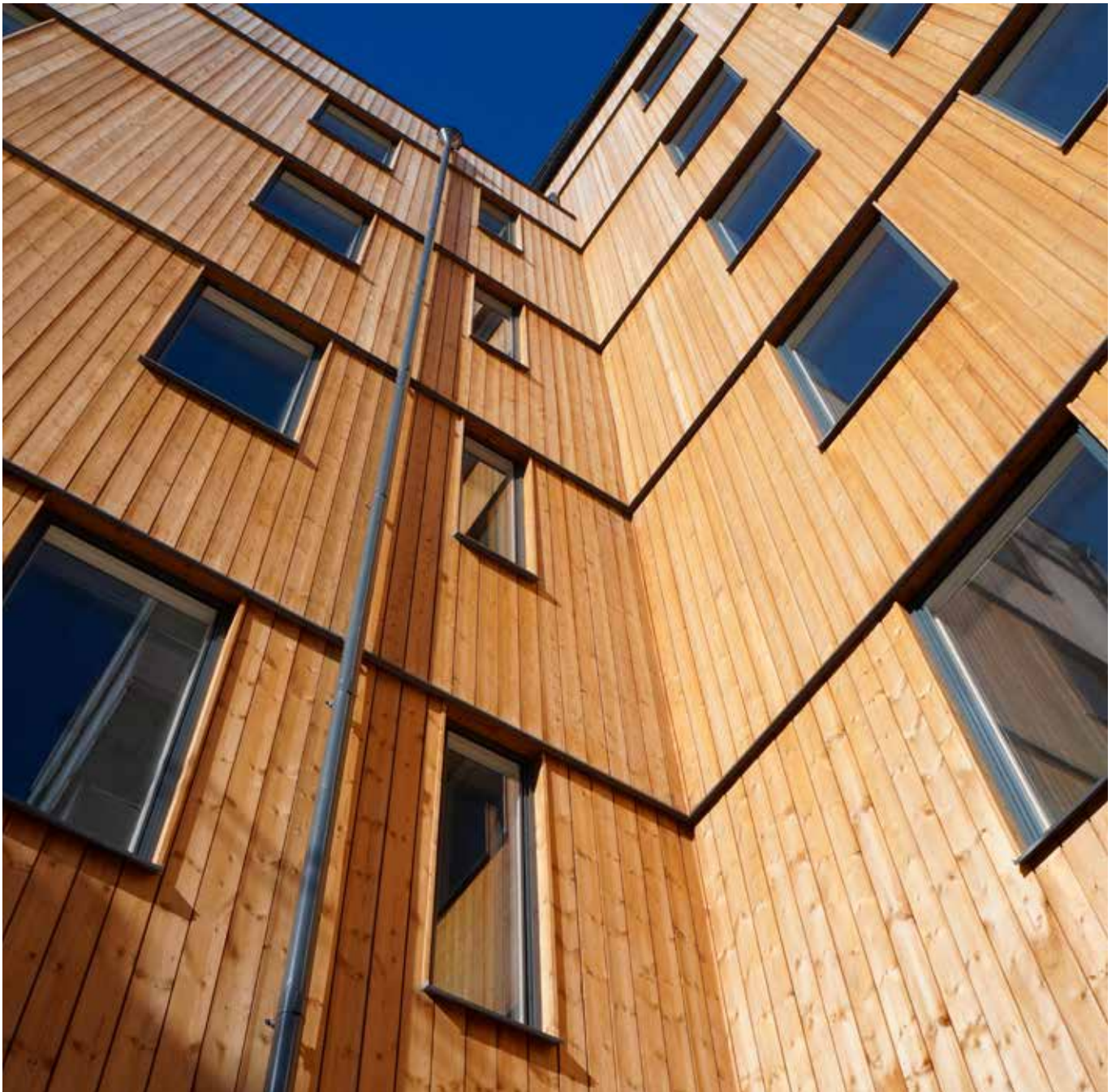


Installation and maintenance of ThermoWood® pine

ThermoWood products are completely naturally treated using heat and steam to provide endurance against challenging weather conditions. It is as beautiful as it is hard wearing, and is a one hundred per cent natural product for use in contemporary wooden architecture both indoors and outdoors.



OUTDOOR USE

Thermowood can be used outdoors as an environmentally friendly alternative to pressure impregnated timber. Its durability is lower than in untreated pine and spruce (approx. 25% lower in branches and 15% lower in pure timber material) and the material should not be used in cases where there is a risk of personal injury if the timber fails.

INSTALLING THERMOWOOD

We recommend pre-drilling in order to avoid the formation of cracks as the wood is relatively brittle. The wood offers good antifouling characteristics, which results in an acidic PH level, which can react to other materials causing miscoloured drip marks as a result. In order to avoid this, you should use stainless steel screws of A2 quality or better. If the installation is in proximity to the sea, use A4 quality as a minimum. If nails are being used, these should also be stainless steel and should have a cross-cut tip. Screw and nail heads should be countersunk to be level with the surface of the wood.

ThermoWood facade panels (max width 142 mm) are form stable and can be attached using a nail or screw per board with a max c/c distance of 600 mm between the attachment points.

ThermoWood Duckboard 26 mm should be mounted using c/c 450 mm. Mount the boards with a longitudinal gap of at least 5 mm between the boards to ensure the wood has space to swell if it is dry when installed. Wood is a living material, shrinking and swelling with the seasons. Always ensure there is good ventilation and air flow beneath the duckboard deck. The distance between the duckboard and ground should be at least 20 cm. Build with an incline to ensure no standing water occurs.

SURROUNDING MATERIAL

As ThermoWood may react to non-stainless metals found in things such as garden furniture or barbecues, we recommend the use of protection between any metal and the wood surface.

If a cladding surround material is used, we recommended the use of stainless metal cladding. Using the wrong material may cause drip marks to appear, either on the wood or on the surrounding material. All material that comes into contact with rainwater from ThermoWood should withstand a lower PH value in order to avoid leaving marks. You should also be aware that porous materials (e.g. plaster or concrete) may be discoloured by tannins from the wood during rainfall. Ensure that rainwater is led away from these surfaces.

For more information,
visit www.sodrawoodproject.com
or email us at info.swp@sodra.com



TREATMENT

Ongoing maintenance is required in order to maintain the brown shade. Use a pigmented oil. ThermoWood does not require treatment to maintain its functionality, but will assume a grey shade after a period of time if left untreated.